

[CLICK HERE TO SIGN UP!](#)

Learn to Play

(Advanced)

For Speech Language Therapists, Occupational Therapists, Special Education Teachers, Early Childhood Interventionists and Mental Health Professionals



Advanced Learn to Play

Platform: Zoom Cloud Meetings

Date: 2 and 3 November 2021

Time: 9 am to 3.30 pm

Fee: S\$680 (\$612 for early bird participants)

Pre-requisite: Participants must complete Basic Learn to Play to attend this Advanced workshop.



✉ bridging@totalcommunication.com.sg
☎ +65 915 8895

Organised by: Total Communication Therapy
W10 Winstedt Road, Block A #02-01, (S) 227977 | www.totalcommunication.com.sg



Total Communication
Changing Lives, Transforming Futures

ABOUT LEARN TO PLAY

Learn to Play is a practical and workable resource for planning play activities in therapy and in development intervention settings. Learn to Play Therapy aims to equip children for spontaneous Pretend Play, which is an important developmental occurrence. Research evidence has shown that children who develop more complex levels of pretend play increase in their abilities in social competence, narrative language, language, self-regulation, creativity, and problem solving.

Karen Stagnitti is Emeritus Professor in the School of Health and Social Development at Deakin University, Victoria, Australia. She graduated with a Bachelor degree in Occupational Therapy from the University of Queensland and has worked for for over 30 years in community-based and family early childhood intervention teams as part of a specialist paediatric multidisciplinary team. She has developed several play assessments including: Child- Initiated Pretend Play Assessment 2, the Pretend Play Enjoyment Developmental Checklist and the Animated Movie Test. From these research, Learn to Play Therapy was developed. Throughout the years, Karen has been invited to present her work in nationally and internationally, including Canada, UK and many more.

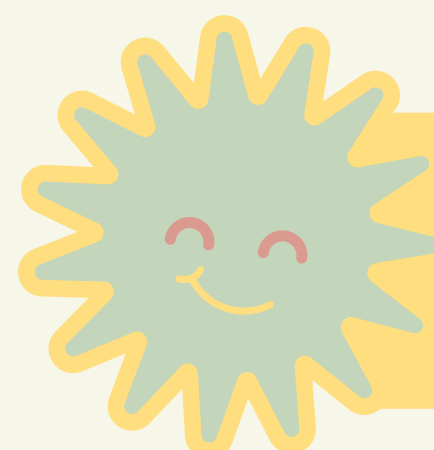
ABOUT OUR SPEAKER

DAY 1

- Understanding the Therapeutic Presence
- The theoretical framework for Learn to Play Therapy
- Using play in working with children with trauma
- Using the Animated Movie Test

DAY 2

- Advance Therapeutic Skills
- Learn to play therapy for children on the autism spectrum
- Working with parents
- Working with children aged 7-10 years old.

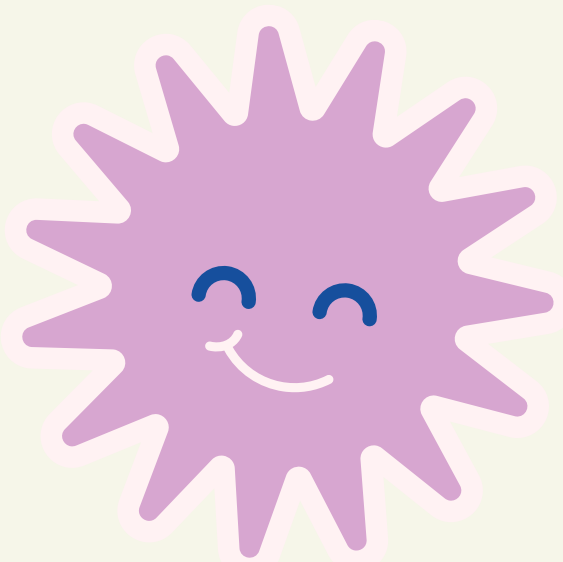


[CLICK HERE TO SIGN UP!](#)

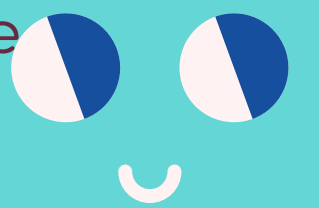
What will you take away?

The Advanced Learn to Play Workshop will complement the concepts covered in Basic Learn to Play and provide more opportunities for professionals to practise administering the PPDEC on real cases. Participants will also learn to administer the Animated Movie Test, which is another assessment tool for older children and adolescents. Participants will also have the opportunity to discuss and evaluate Learn to Play session plans.

Testimonials



Karen's Advanced Learn To Play course offers a more detailed description of the importance of play, and how trauma impacts on children's ability to engage in this domain. She provides comprehensive case-study examples to illustrate the sensitive nuances of these cases.



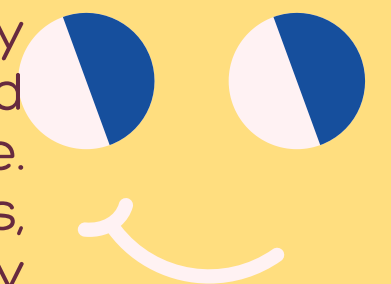
Georgina K,
Speech and Language Therapist

It was very useful to my work as a speech pathologist. It really made it clear how important play can be as a therapeutic tool. It shows the benefits of pretend play across lots of language and social dimensions. It also is very informative for educators to understand how early identification of poor pretend play skills is imperative in terms of social and language development. I think more information linked to neurology and pretend play would be great. Maybe Event Related Potentials or brain imagery scans to show the efficacy/ neuronal activity during pretend play.



Blake O,
Speech and Language Therapist

I had the privilege of attending Karen Stagnitti's Advance Learn to Play last year. Having already completed the Basic level training, I was already familiar with the play hierarchy and competent in conducting play assessment. I found this to be really useful for a wide age range of children and this gave me more confidence in my language therapy. As a Speech and Language Therapist I had also come across more complex cases including children with diagnoses and trauma backgrounds. Attending the Advanced Learn to Play workshops supported me to deal competently and confidently with these cases in a way that I hadn't before. I particularly enjoyed the dynamic mix of videos, discussion, lectures, and case studies which helped solidify my learning.



Charlotte H,
Speech and Language Therapist



Organised by: Total Communication Therapy

W10 Winstedt Road, Block A #02-01, (S) 227977 | www.totalcommunication.com.sg



Total Communication
Changing Lives, Transforming Futures